

Laser Hair Removal 805nm

Lower Abdomen



Baseline



Followup after 6 treatments

LightSheer DUET, High Speed handpiece, 805 nm wavelength Skin type III, Fluence: 8.5-10J/cm², Pulse duration: 30 ms

Courtesy of Daniela Cangelosi, MD

Laser Hair Removal 805nm

Back and Shoulders



Baseline



After 2 treatments

LightSheer DUET, High Speed handpiece Fluence: 10J/cm², Pulse duration range: 30-70 ms (Custom mode), 805 nm wavelength

Courtesy of Mitchel Goldman, M.D.

Laser Hair Removal 805nm

Axilla



Baseline



6 months follow up after 3 treatments

LightSheer DUET, High-Speed handpiece Skin type IV, Brown hair , Fluence: 11 J/cm², Pulse duration: 60-66ms, 805 nm wavelength

Courtesy of Suzanne Kilmer, M.D.

Laser Hair Removal 805nm

Lower Abdomen



Baseline



6 months follow up after 5 treatments

LightSheer DUET, High Speed handpiece, 805 nm wavelength

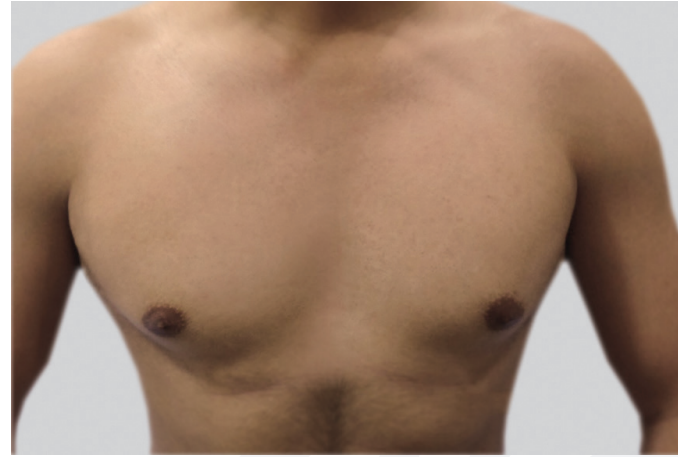
Courtesy of Girish Munavalli, M.D., M.H.S

Laser Hair Removal 805nm

Chest



Baseline



2 months follow-up after 5 treatments

LightSheer DESIRE, High Speed handpiece, 805nm wavelength, Fluence: 7.5-8 J/cm², Pulse Duration: 100 ms

Courtesy of Shweta Virmani, M.D.

Laser Hair Removal 1060nm

Upper Back and Shoulders



Baseline



6 months follow up after 5 treatments

LightSheer INFINITY, High Speed handpiece, 1060 nm wavelength Skin type IV, Fluence: 6-7.5 J/cm², Pulse Duration: 30 ms

Courtesy of Sushil Tahiliani, M.D.

Laser Hair Removal 1060nm

Axilla



Baseline



6 months follow up after 5 treatments

LightSheer INFINITY, High Speed handpiece, 1060 nm wavelength Skin type IV, Fluence: 12 J/cm², Pulse Duration: 50-100 ms

Courtesy of Sushil Tahiliani, M.D.

Laser Hair Removal 1060nm

Axilla



Baseline



6 months follow up after 5 treatments

LightSheer INFINITY, High Speed handpiece, 1060 nm wavelength Skin type IV, Fluence: 12 J/cm², Pulse Duration: 50-100 ms

Courtesy of Sushil Tahiliani, M.D.

Laser Hair Removal 1060nm

Lower Arms



Baseline



6 months follow up after 5 treatments

LightSheer INFINITY, High Speed handpiece, 1060nm wavelength Skin type V, Fluence: 7.5-12.5 J/cm², Pulse Duration: 30-50 ms

Courtesy of Sushil Tahiliani, M.D.